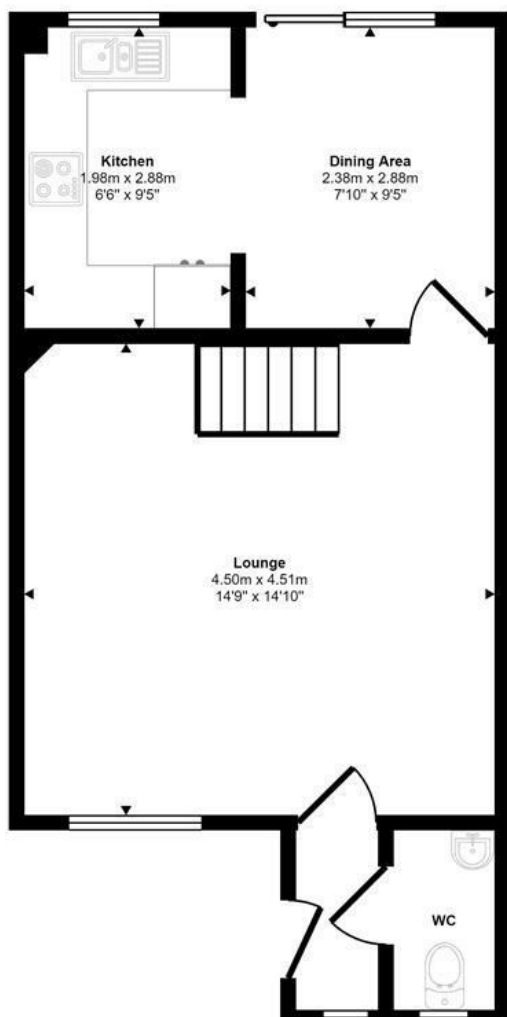




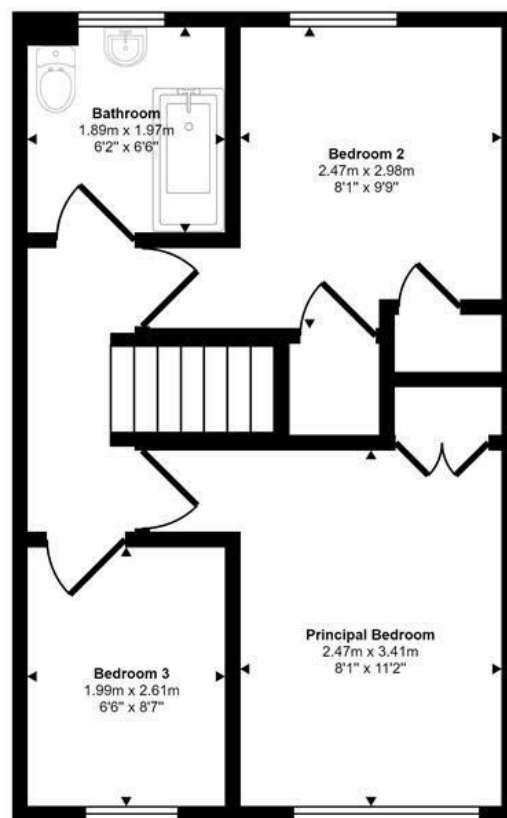
Admirals Way | Norwich | NR9  
 50% Shared Ownership £135,000

abbotFox

Approx Gross Internal Area  
 72 sq m / 772 sq ft



Ground Floor  
 Approx 37 sq m / 400 sq ft



First Floor  
 Approx 35 sq m / 371 sq ft

Energy Efficiency Rating		Current	Potential
Very energy efficient - lower running costs			
(92 plus) A			87
(81-91) B			
(69-80) C		71	
(55-68) D			
(39-54) E			
(21-38) F			
(1-20) G			
Not energy efficient - higher running costs			
England & Wales		EU Directive 2002/91/EC	

Disclaimer – In accordance with the Property Misdescriptions Act, the company gives notice that all descriptions, references to condition, necessary permissions for use and other details are given in good faith and believed to be correct, but any intending lessees do not rely on them as statements of fact, but must satisfy themselves by inspection or other means, as to their accuracy.

This floorplan is only for illustrative purposes and is not to scale. Measurements of rooms, doors, windows, and any items are approximate and no responsibility is taken for any error, omission or mis-statement. Icons of items such as bathroom suites are representations only and may not look like the real items. Made with Made Snappy 360.



abbotFox presents this shared ownership, three bedroom semi-detached house. Set in the popular and well serviced village of Hethersett, this home represents an ideal opportunity for any first time buyer or young family. The accommodation comprises; entrance hall, cloakroom, lounge and kitchen diner to the ground floor, with three bedrooms and a bathroom to the first floor. Externally, the property benefits from ample off road parking, garage and a private enclosed rear garden. Properties of this nature are rarely available with an internal viewing essential.

Agents Note: Please note the price shown is for a 50% share. Full market value is £270,000. Eligibility criteria apply, please contact the office for further information.

